



Web site: <http://www.filemover.be>

Support e-mail: moveit2@telenet.be

MoveIt2 is a utility to automatically move - copy - delete files that are added to a specific folder. You can set filters based on the file name, rename files (using regular expressions) when moving them to the new destination, create directories based on the file name or date and check if the file already exists. The program can move files from/to local folders as well as FTP directories and to SmtP. MoveIt2 offers quite a few features that make the program very flexible and useful for a variety of file management tasks as well as file backups. It runs in the system tray and automatically monitors the selected folders for any additions that match your file moving rules. You can set up as many working threads as wanted (Full Version), each with individual settings. Other features include detailed logging, support for subdirectory scanning, command-line options and more. The free Lite version is restricted to 5 MoveIt2 threads (moving rules).

- Threated, one thread for each entry
- Logging possibilities, at run-time and log file
- Separate logging for each MoveIt2 thread (v4.45)
- Adjustable log file size (v4.15)
- Full debug capability using a Win32 debug monitor (DebugView, freeware at www.sysinternals.com)
- Enable/Disable debug capability for each thread separately (v4.47)
- Adjustable input scan time
- Win32 input directory, local or network
- Ftp input directory (v4.9)
- Input file stabilize option
- Scan input subdirectories option
- Input file prefix filter
- Multiple input file include filter
- Multiple input file exclude filter (v4.21)
- Input/Output filename rename filter
- Input file backup option, local or network
- Win32 file move output
- Ftp file move output
- Multiple file move output, multiple Win32/Ftp or combined
- Loadbalancing file move option
- Create output subdirectories using the input subdirectories option
- Create output subdirectories using the filename option (v4.61)
- Create output subdirectories using x char of the filename option (v4.61)
- Create output subdirectories using the filedate option (v4.61)
- Create output subdirectories using the systemdate option (v4.61)
- Fail if file exist option [win32 only]
- Delete input file if move fails option [win32 and/or Ftp]
- Delete output filename extention
- Delete output filename prefix
- Editable info screen for each thread (v4.15)
- Add security prefix to output filename option (v4.61)
- Auto create backup folder if not exist option (v4.61)
- Auto create ftp tempory folder if not exist option (v4.61)
- Auto create destination folder (win32) if not exist option (v4.61)
- Execute command on input file option (v4.69)

Automate the Moving of Files

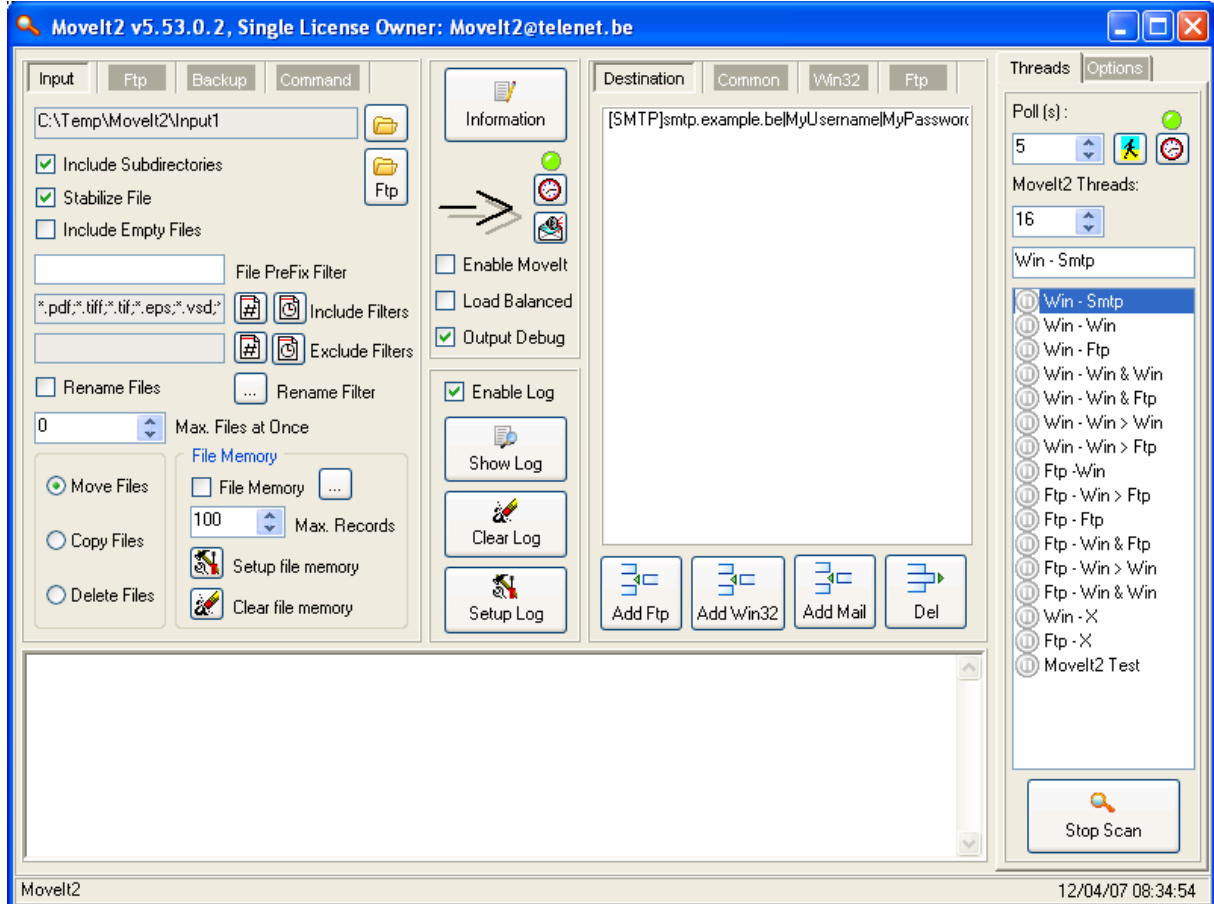


- ...
- Run @ Startup option(v4.74)
- Maximum Files at Once option (v4.81)
- Ftp Port adjustable (v4.87)
- Ftp Receive buffer size option, GET and PUT (v4.87)
- Ftp Send Buffer size option, GET and PUT (v4.87)
- Ftp Bound IP adres option (v4.87)
- Ftp Bound IP port option (v4.87)
- Ftp Get resume option (v4.89)
- Ftp Put append option (v4.89)
- Ftp Passive connection method option (v4.89)
- Internal changes in preparation of a service version (v5.0)
- Move/Copy function selection (v5.01)
- Input file backup options [overwrite, fail if exists, version suffix, datetime suffix] (v5.02)
- Delete function selection (v5.03)
- Only newer files [win32 only] (v5.05)
- Remove ReadOnly flag input files if possible, otherwise ignore (v5.05)
- Attention: input and output file rename filter is obsolete ! (-v5.10)
- New powerful file rename option using regular expressions (v5.10)
- Create multiple output subdirectories separated by '\', i.e. %FD\%IS:1-5 (v5.14)
- Backup only newer files (v5.15)
- Up+++/Down--- Listbox MoveIt2 Threads (v5.15)
- File Memory option, move/copy/delete the same file once from Win32 input directory (v5.19)
- File Memory option, move/copy/delete the same file once from FTP input directory(v5.24)
- Startup parameter RunOnce (/RunOnce), MoveIt2 will run once (system tray icon) and terminate. In the Lite version only the first MoveIt2 thread will execute when using this startup parameter. In the Full version every enabled MoveIt2 thread will be executed. The stabilize option doesn't work when using this startup parameter (v5.25).
- File Memory option setup, same size+date, same size, same date, older and same date (v5.26)
- File Memory option setup, newer and same date (v5.27)
- Backup suffix option, start with.. (v5.29)
- New backup prefix option (v5.30)
- Run in system tray option (v5.31)
- Time Schedule option, common (lite version) and for each entry (v5.35)
- Time Schedule option, From Time > Until Time (v5.36)
- Time Schedule option, From Time > Until Time is obsolete (v5.38)
- Time Schedule option, Not From .. Until (v5.38)
- Time Schedule option, Enable days not available in Time Schedule (v5.39)
- Add Win32 input/output folder using drag and drop (v5.39)
- Event Manger option, Sound on Error and/or Success (v5.40)
- Event Manger option, Sound on Backup Error and/or Success (v5.41)
- Execute command after Move/Copy/delete success option (v5.48)
- Execute command after Move/Copy/delete error option (v5.48)
- Execute command after Backup success option (v5.48)
- Execute command after Backup error option (v5.48)
- Event Manger option, mail on error and/or success (v5.48 full version)
- Event Manger option, mail on backup error and/or success (v5.48 full version)
- Event Manger option, include input file as attachment in Mail (v5.49 full version)
- Output Mail (SmtP) Destination (v5.51 full version)
- Include & Exclude Filedate Filter (v5.53)
- ..
- And last but not least, stress tested

Automate the Moving of Files



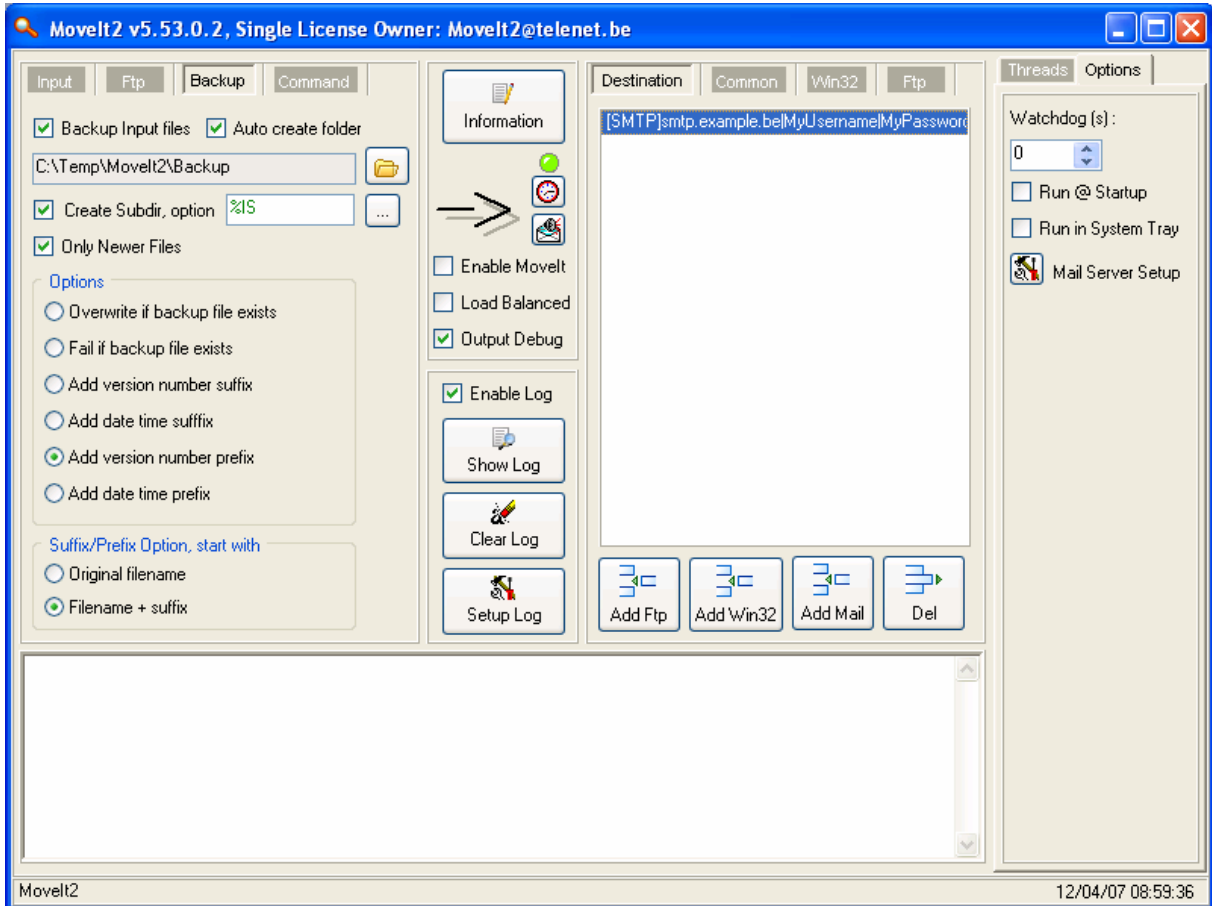
Main Screen:



Global Options:

- ❖ Enable MoveIt2: Enable the selected MoveIt2 thread (Moving rule).
- ❖ Load Balancing: Use load balancing technique for output destinations. You must have more than one output destination. For example two output destinations. The first file will go to the first output destination. The second file will go to the second output destination. The third file will go to the first output destination. ...
- ❖ Output Debug: Output debug information for the selected MoveIt2 thread. This gives you full debug capability when using a Win32 debug monitor (DebugView, freeware at www.sysinternals.com).
- ❖ Information: Show or input information for the selected MoveIt2 thread.
- ❖ Watchdog (s): Watchdog time in seconds. If a thread doesn't finish within this watchdog time, then the thread will be terminated.
- ❖ MoveIt2 threads: Amount of MoveIt2 threads. Restart MoveIt2 after changing the amount of threads.
- ❖ Description Box: Description of the Selected MoveIt2 thread.
- ❖ MoveIt2 List: A list of all MoveIt2 threads. Position of a thread can be changed using the right button click (Up/Down). Don't forget to select the thread first.
- ❖ Start/Stop Scan: Start/Stop all MoveIt2 threads.

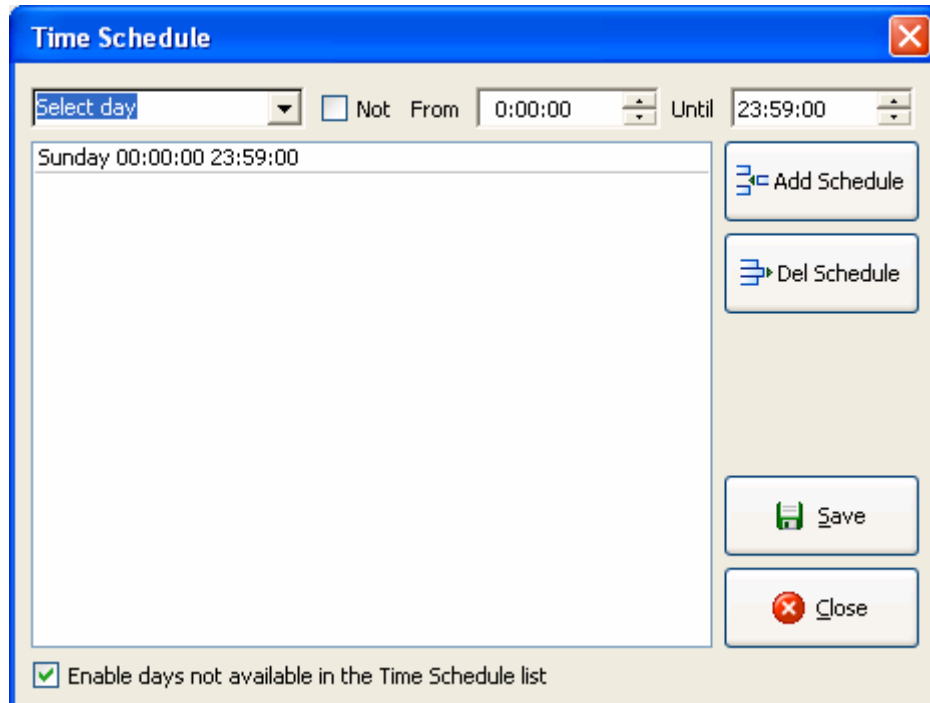
Automate the Moving of Files



Global Options:

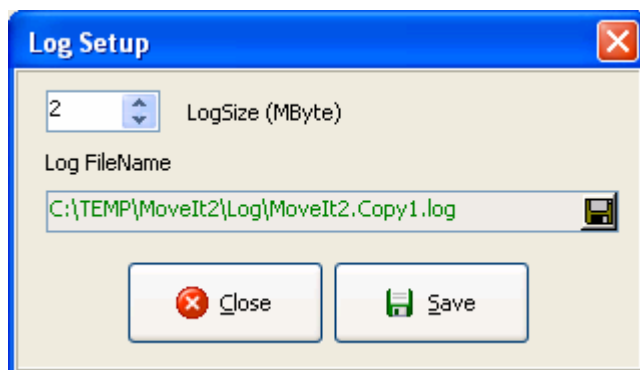
- ❖ Watchdog (s): Watchdog time in seconds. If a thread doesn't finish within this watchdog time, then the thread will be terminated.
- ❖ Run @ Startup: MoveIt2 will automatically run at windows startup. (entry in the HKLM registry).
- ❖ Run in System Tray: MoveIt2 will minimize into the system tray at startup.
- ❖ Mail Server Setup: Global mail settings for the MoveIt2 Event Manager.

Automate the Moving of Files



Log Options:

- ❖ Enable Log: Enable logging to file for the selected thread.
- ❖ Show Log: Show the log for the selected thread.
- ❖ Clear Log: Clear the selected log file.
- ❖ Setup Log: Setup log options for the selected MoveIt2 thread.



- ❖ Log Size: Set the maximum size for the log file.
- ❖ Log Filename: Select the filename for the log file.
- ❖ Save: Save log setup.

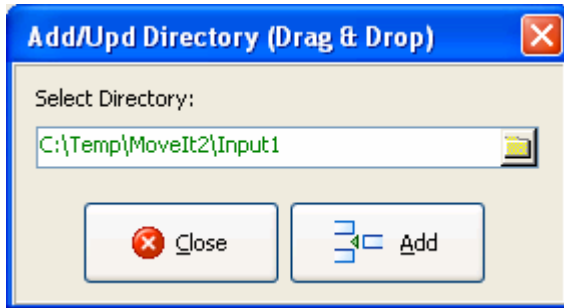
Automate the Moving of Files



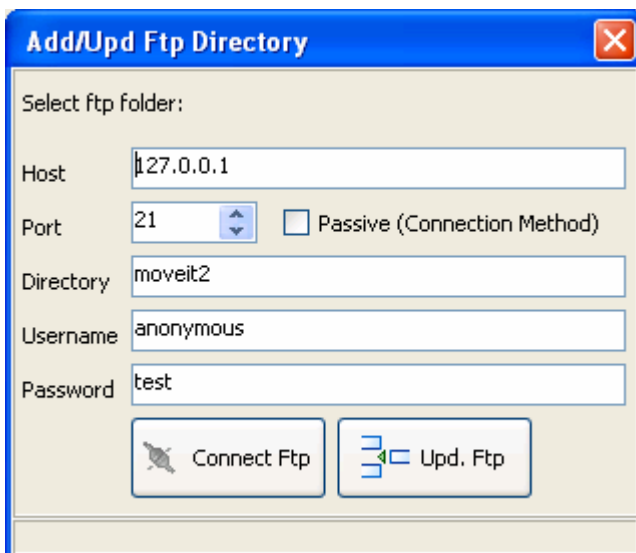
Input Options:

MoveIt2 can scan files from a Win32 or Ftp directory.

- ❖ Add / Update Win32 Input Directory:



- ❖ Add / Update Ftp Input Directory:

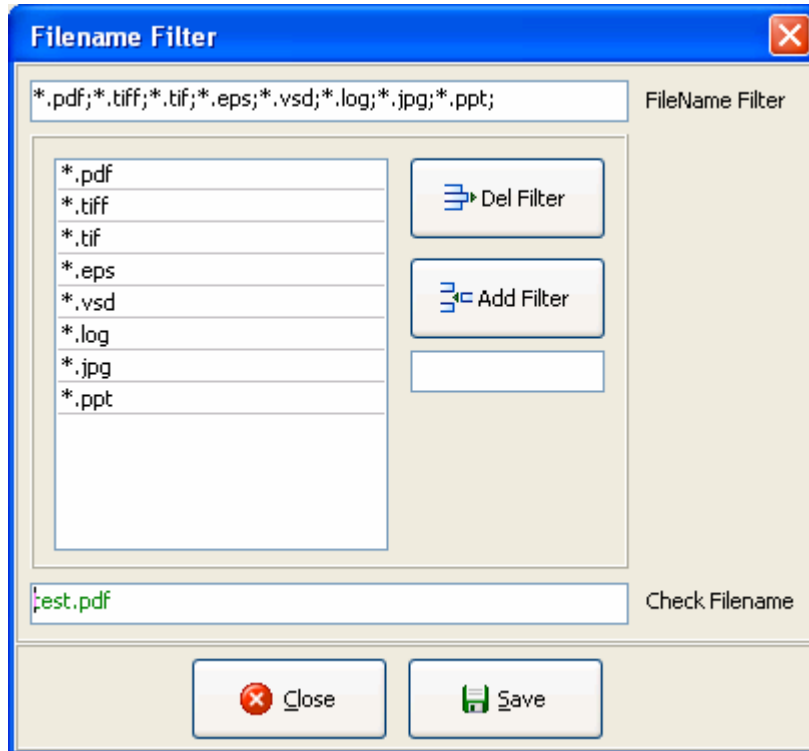


- ❖ Connect Ftp: Check Ftp connection setup.
- ❖ Include Subdirectories: Scan will include subdirectories.
- ❖ Stabilize File: Scan will wait until the file is stabilized (not growing).
- ❖ Include Empty Files: Scan will also pick up empty files (0 bytes).
- ❖ File Prefix Filter: Scan will only pick up files starting with this prefix.

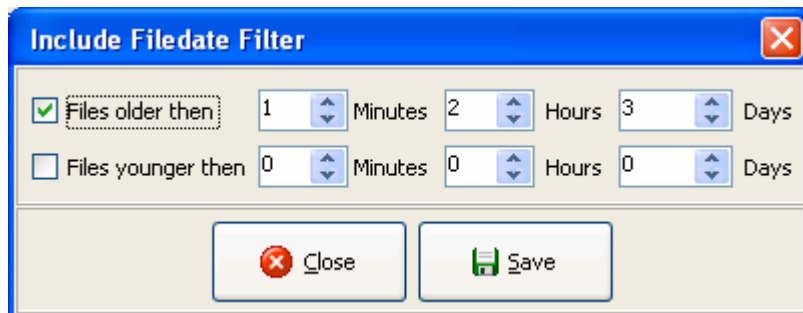
Automate the Moving of Files



- ❖ Filename Include Filter: Scan will only pick up files using this filter(s).



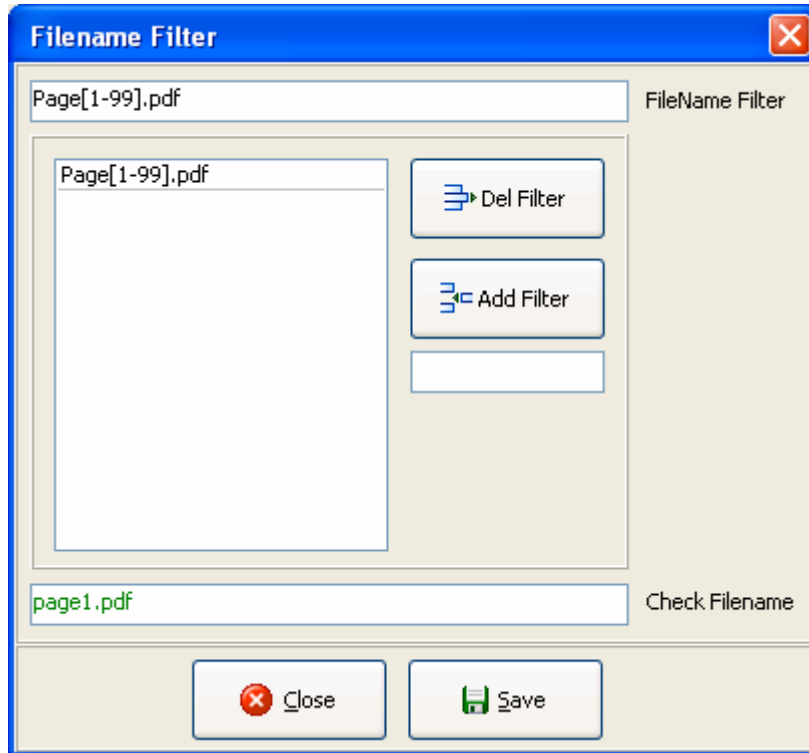
- ❖ Filedate Include Filter: Scan will only pick up files using this date filter(s).



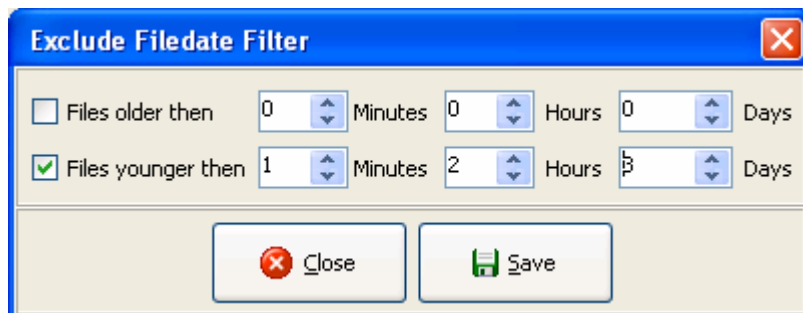
Automate the Moving of Files



- ❖ Filename Exclude Filter: Scan will not pick up files using this filter(s).



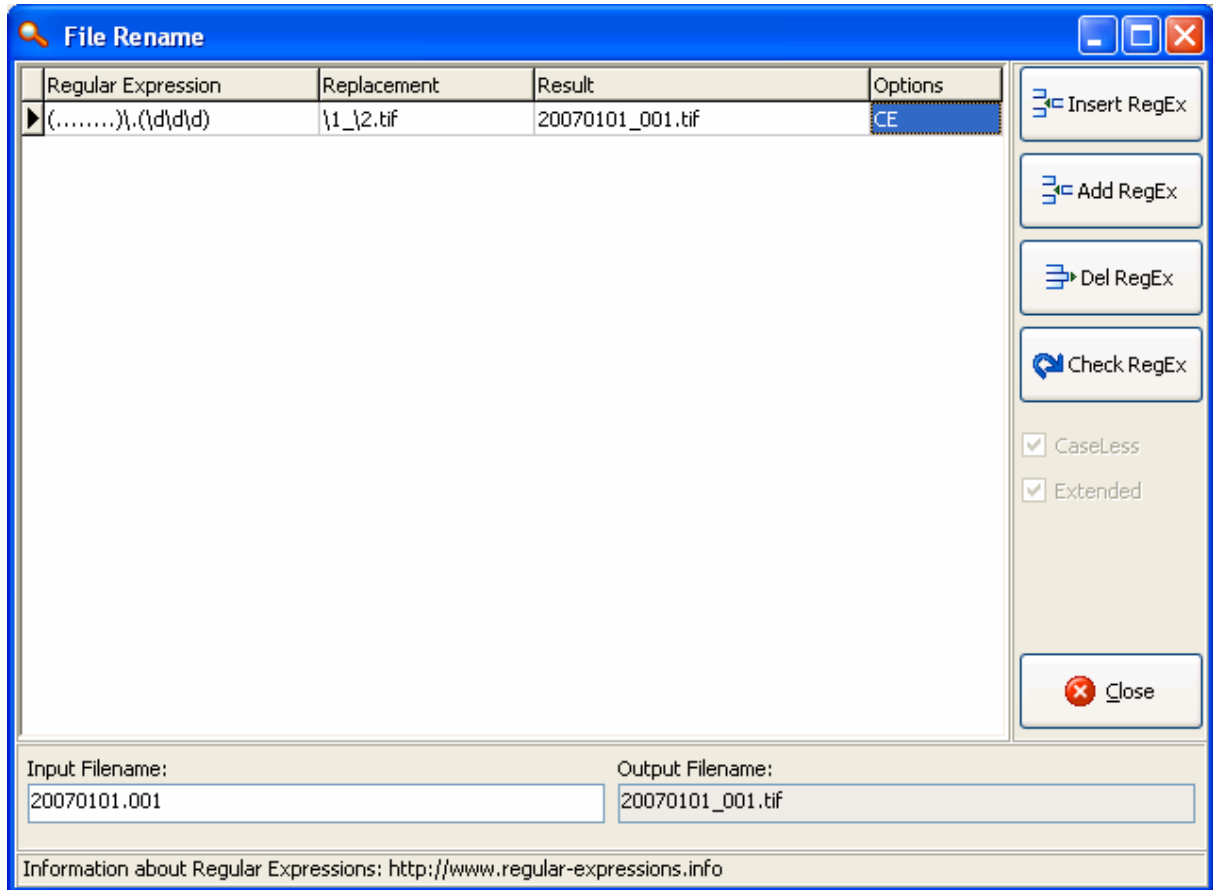
- ❖ Filedate Exclude Filter: Scan will not pick up files using this date filter(s).



Automate the Moving of Files



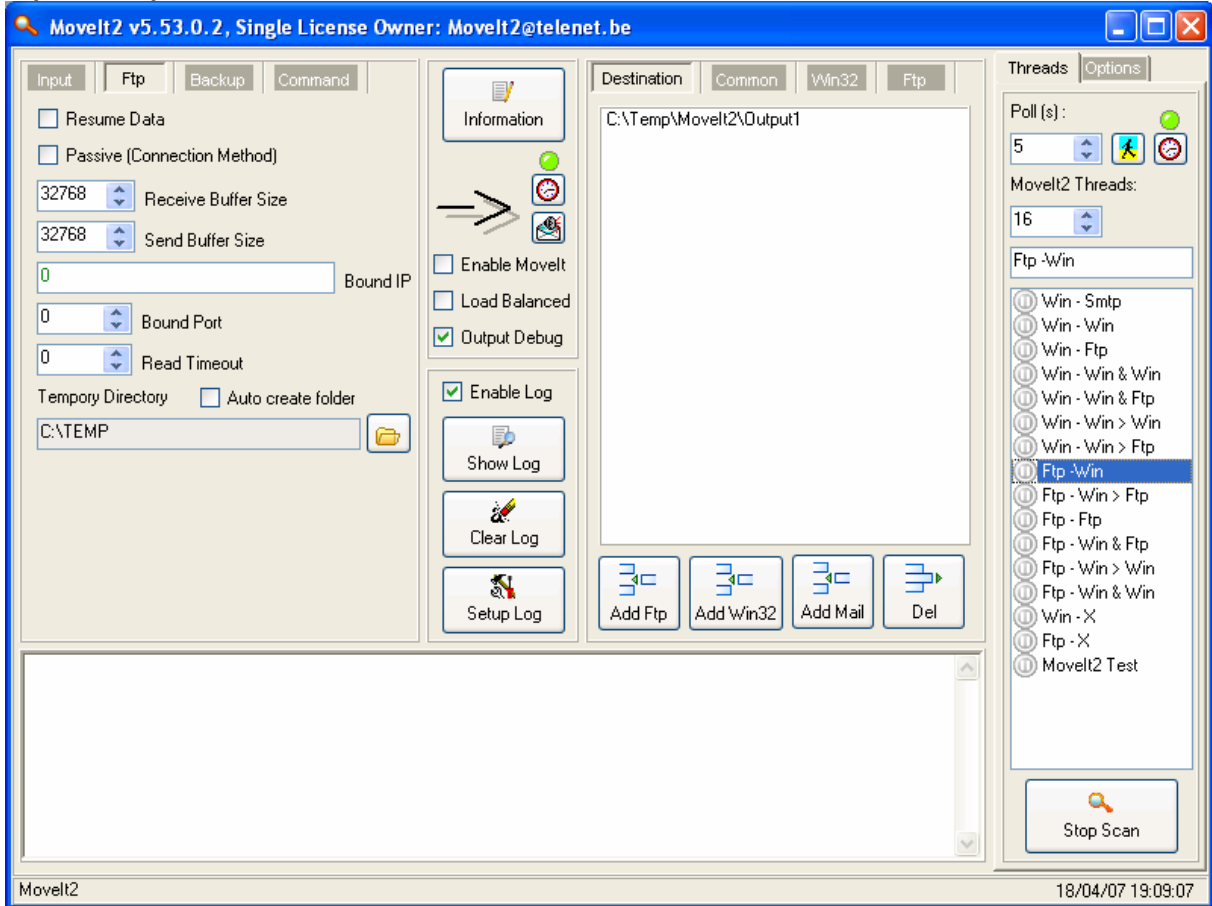
- ❖ Input Rename Filter: You can use regular expressions to rename the input file. A very good site with information about regular expressions is <http://www.regular-expressions.info/>



Automate the Moving of Files



Input FTP Options:

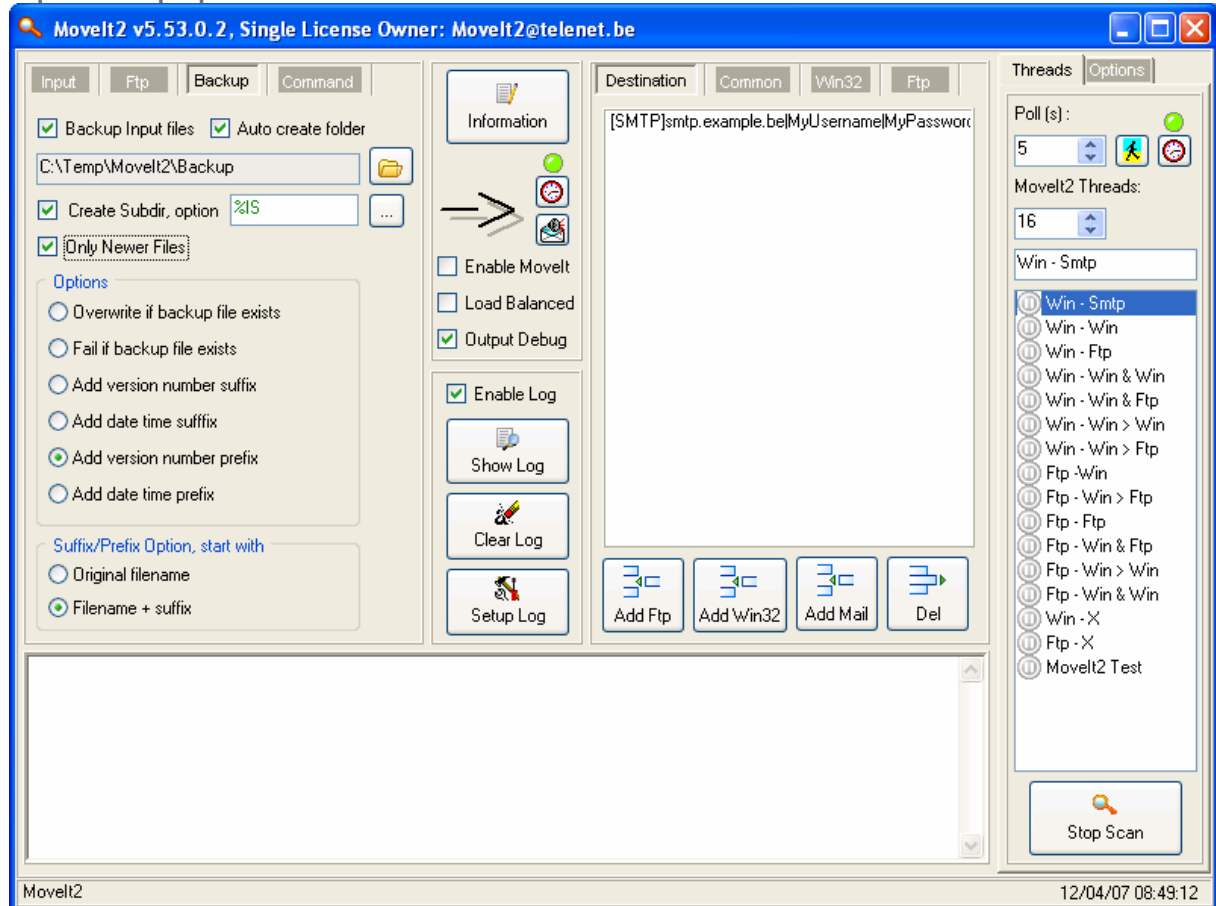


- ❖ Receive Buffer Size: Ftp receive buffer size.
- ❖ Send Buffer Size: Ftp send buffer size.
- ❖ Temporary Directory: Temporary directory, only used with Ftp scan directory.
- ❖ Auto Create folder: Temporary Ftp directory will be created if not exist.

Automate the Moving of Files



Input Backup Options:



- ❖ Backup Input Files: Possibility to backup the original input file.
- ❖ Auto Create folder: Backup Input Files Folder will be created if not exist.
- ❖ Only Newer Files: Only newer files will be backed up. If you enable this in combination with the date time suffix/prefix option, then you'll have to enable the file memory option.

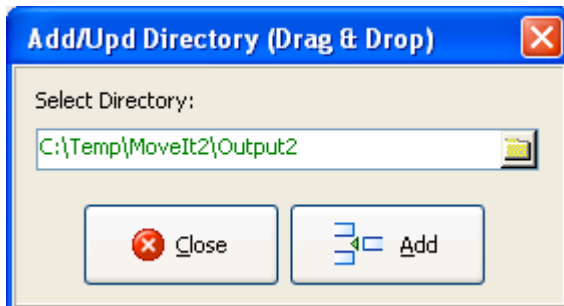
Automate the Moving of Files



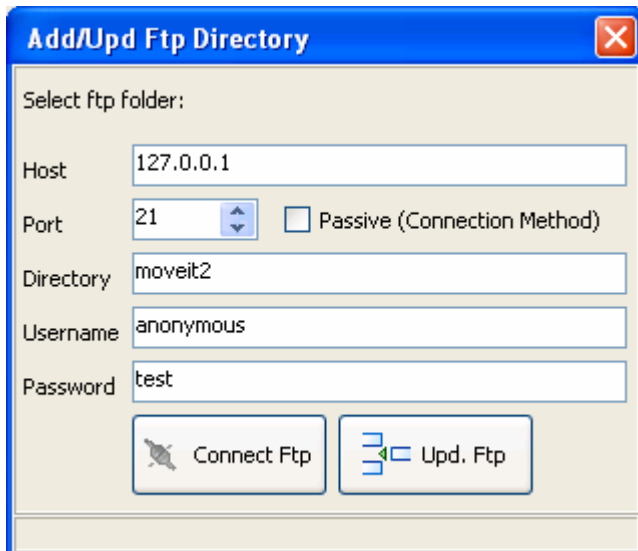
Output Destination(s):

MoveIt2 can move files to (multiple) Win32 and/or Ftp and/or Smtip destinations.

- ❖ Destination List: A list of all output destinations. Position of a destination can be changed using the right button click (Up/Down). Don't forget to select the destination first. Double click on a destination will open a setup screen.
- ❖ Add / Update Win32 Output Directory



- ❖ Add / Update Ftp Output Directory



Automate the Moving of Files



- ❖ Add / Update Smtplib Output Directory

Mail Output [Close]

Host:

Username:

Password:

Port:

From:

To:

CC:

BCC:

Subject:

Body:

Include Input File as Attachment

Max. Size Attachment in KBytes

- ❖ Del: Delete selected output destination.

Automate the Moving of Files



Input Command Options:

The screenshot shows the MoveIt2 v5.53.0.2 software interface. The title bar reads "MoveIt2 v5.53.0.2, Single License Owner: MoveIt2@telenet.be". The interface is divided into several sections:

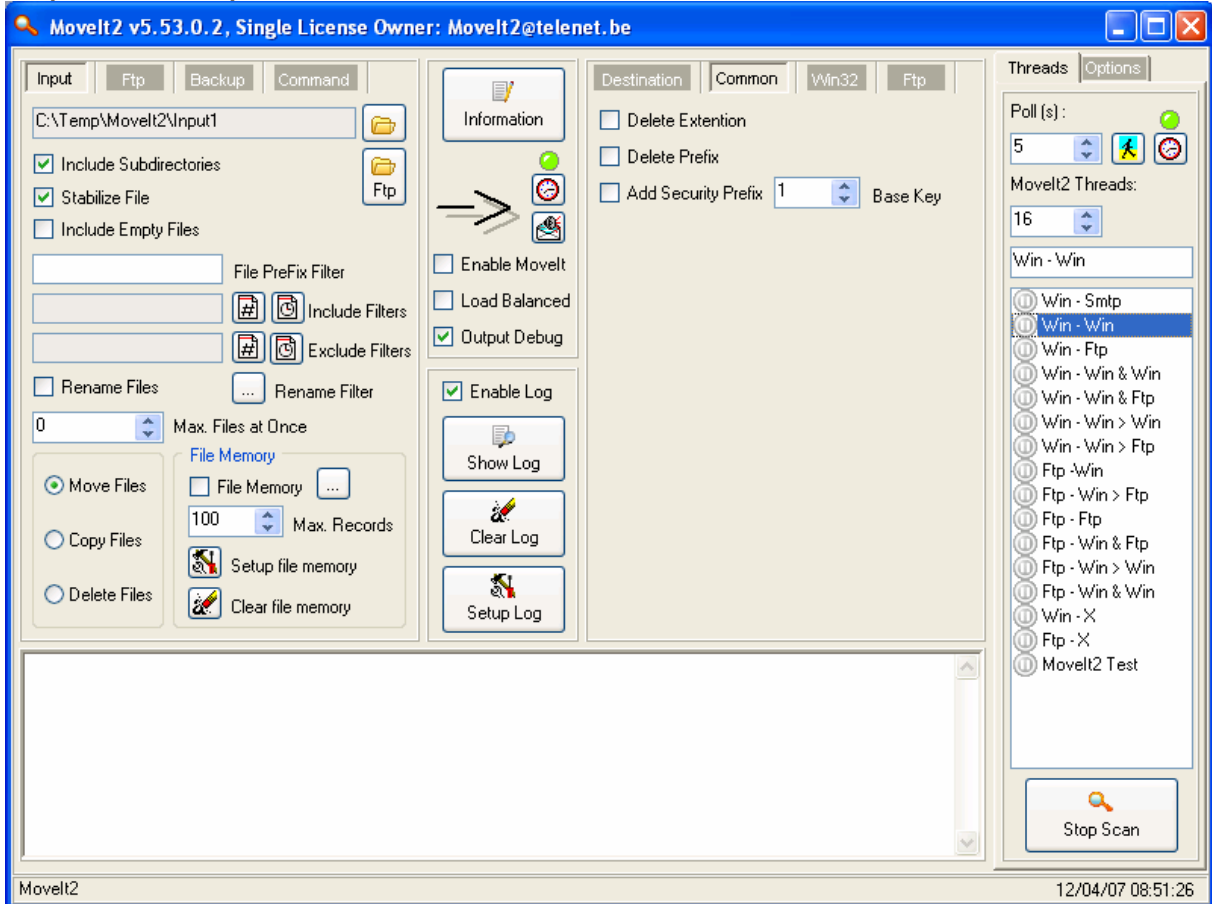
- Input Command Options:** Includes checkboxes for "Execute Command before Move/Copy/Delete" (checked), "Execute Cmd after Move/Copy/Delete Success", "Execute Cmd after Move/Copy/Delete Error", "Execute Command after Backup Success", and "Execute Command after Backup Error". It also has fields for "cmd" (containing "/c copy %ID%\%FN c:\test"), "Parameters", and "Default Dir.". A "Start Operation" dropdown is set to "Open".
- Information:** Contains a "Destination" field with the text "[SMTP]smtp.example.be\MyUsername\MyPasswor".
- Log and Debug:** Includes checkboxes for "Enable Movelt", "Load Balanced", and "Output Debug" (checked). There are buttons for "Show Log", "Clear Log", and "Setup Log".
- Threads:** A panel on the right showing "Poll (s): 5" and "MoveIt2 Threads: 16". A list of threads includes "Win - Smtip", "Win - Win", "Win - Ftp", "Win - Win & Win", "Win - Win & Ftp", "Win - Win > Win", "Win - Win > Ftp", "Ftp - Win", "Ftp - Win > Ftp", "Ftp - Ftp", "Ftp - Win & Ftp", "Ftp - Win > Win", "Ftp - Win & Win", "Win - X", "Ftp - X", and "MoveIt2 Test". A "Stop Scan" button is at the bottom.

The status bar at the bottom left shows "MoveIt2" and the bottom right shows the date and time "18/04/07 19:11:14".

Automate the Moving of Files



Output Common Options:

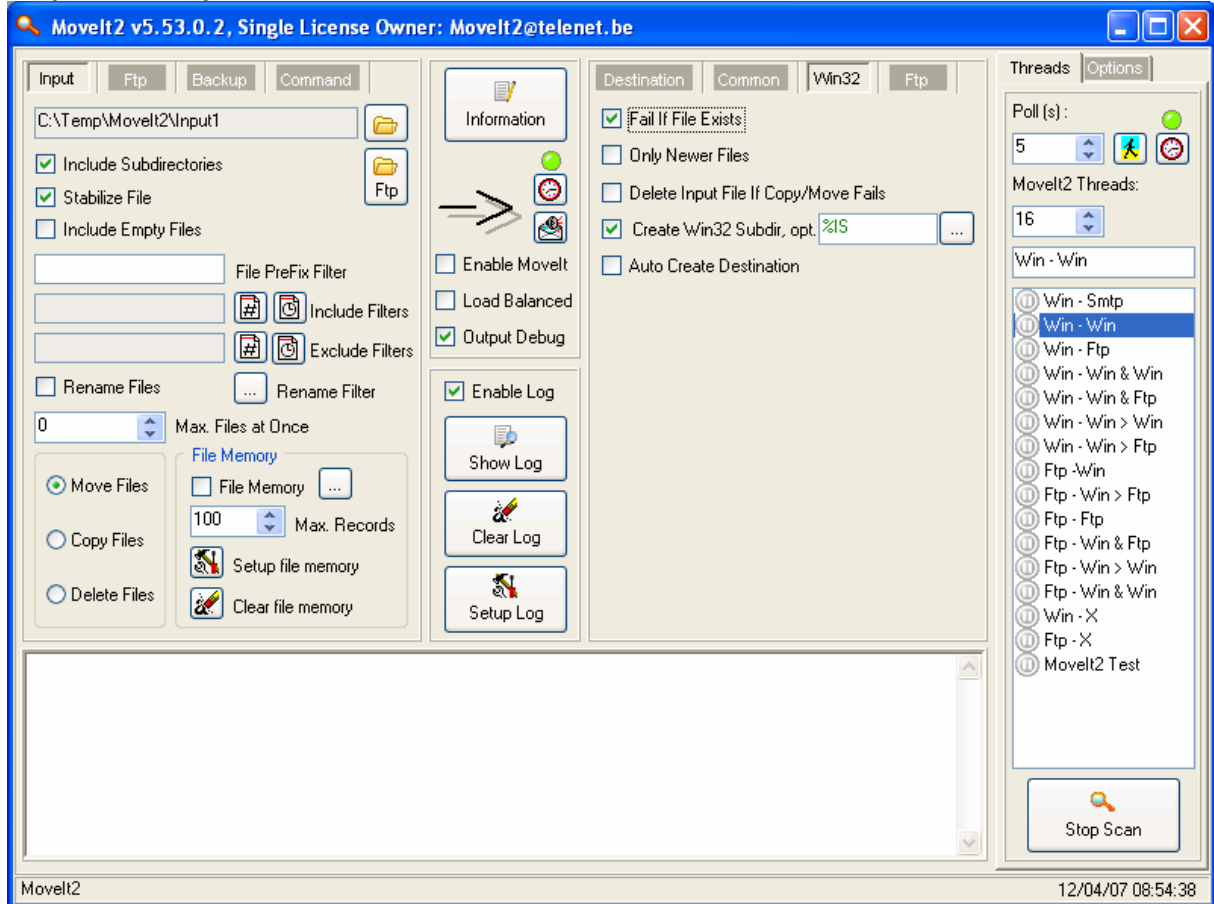


- ❖ Delete Extension: Delete the extension of the input filename before moving to the output destination(s).
- ❖ Delete Prefix: Delete the prefix (see file prefix filter input option) of the input filename before moving to the output destination(s).
- ❖ Add Security Prefix: Add security prefix number to the output filename. This unique number is generated using the security base key in combination with the output filename. Mail me for information about this feature.

Automate the Moving of Files



Output Win32 Options:

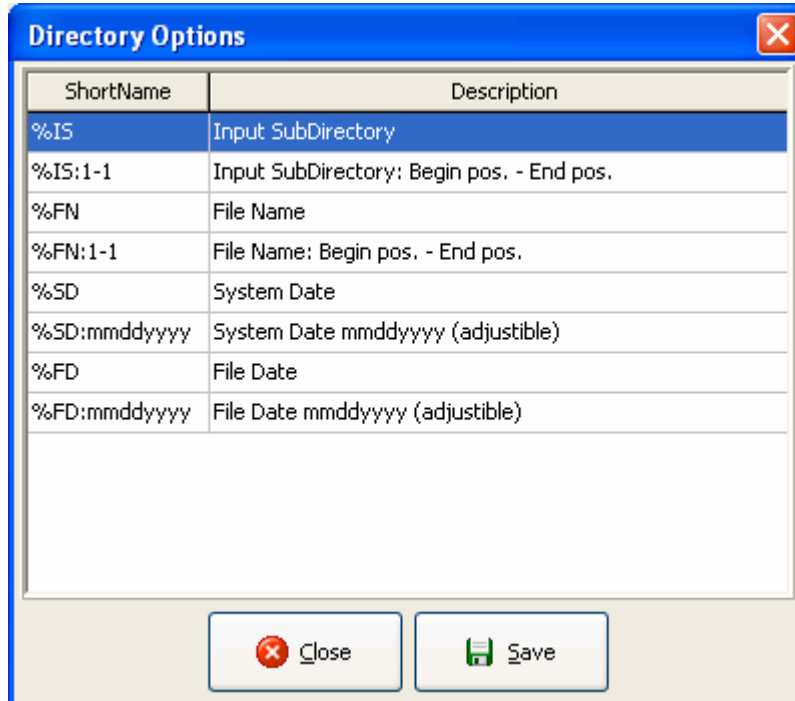


- ❖ Fail If Exist (Win32): Don't move files that already exist in the Win32 output destination.
- ❖ Delete Input if Fail (Win32): Input file will be deleted if the move to the Win32 output destination fails.
- ❖ Auto Create Destination (Win32): Automatically create Win32 output destination if not exist.

Automate the Moving of Files



MoveIt2

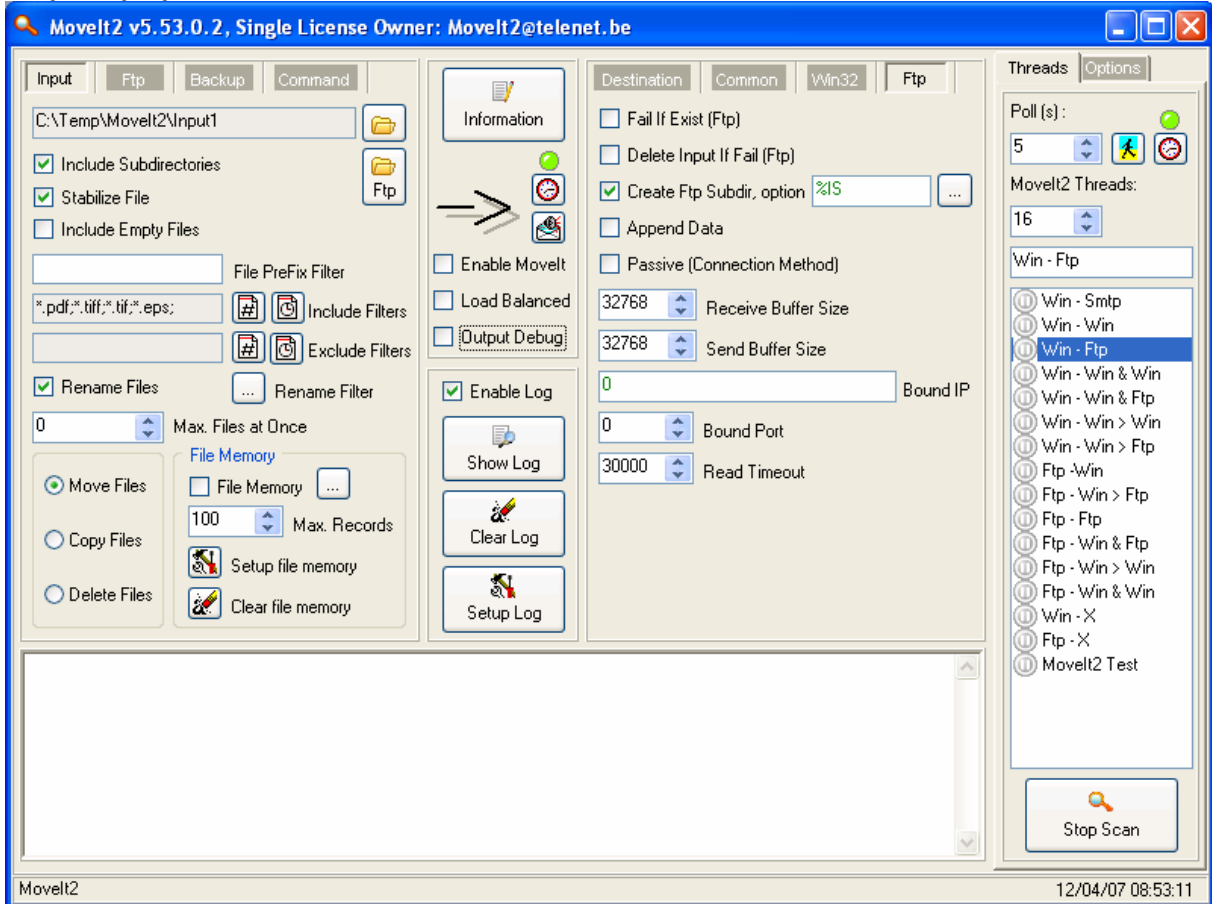


- ❖ Create Win32 Subdir: Create Subdirectory for the Win32 output destination.
- ❖ Create Win32 Subdir, option: Subdirectory option textbox. Double click to open subdirectory options screen.

Automate the Moving of Files



Output Ftp Options:

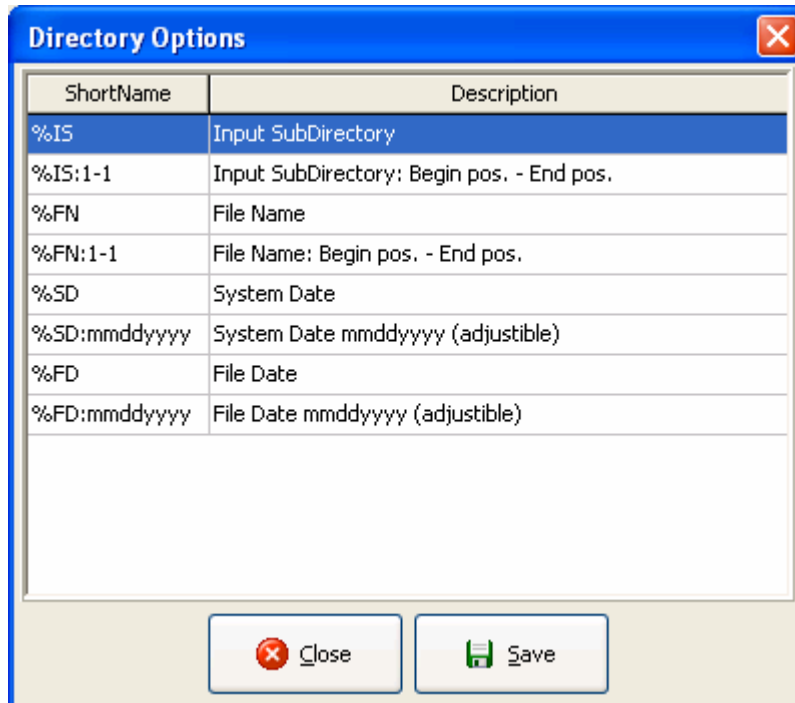


- ❖ Fail If Exist (Ftp): Don't move files that already exist in the Ftp output destination.
- ❖ Delete Input if Fail (Ftp): Input file will be deleted if the move to the Ftp output destination fails.
- ❖ Receive Buffer Size: Ftp receive buffer size.
- ❖ Send Buffer Size: Ftp send buffer size.

Automate the Moving of Files



MoveIt2



- ❖ Create Ftp Subdir: Create Subdirectory for the Ftp output destination.
- ❖ Create Ftp Subdir, option: Subdirectory option textbox. Double click to open subdirectory options screen.

Automate the Moving of Files